

### BEFORE YOU BEGIN

#### HOW TO USE THESE INSTRUCTIONS

Please read these instructions carefully to familiarize yourself with the required tools, materials, and installation sequences. Follow the sections that pertain to your particular installation. This will aid you in avoiding the unnecessary expense associated with improper installation. In addition to proper installation, read all operating and safety instructions.

All information in these instructions is based on the latest product information available at the time of publication. Kohler Co. reserves the right to make changes in product characteristics, packaging, or availability at any time without notice.

#### NOTES

- Review all local plumbing and building codes.
- Bottom of vacuum breaker must be positioned at least 6" above fixture rim. Local codes may differ.
- Piping should run downward, regardless of rough-in height.
- \*\*Variation and/or finish/color code may be required when ordering.



**CAUTION: Risk of product damage.** Do not subject vacuum breaker to continuous pressure for more than 12 hours.

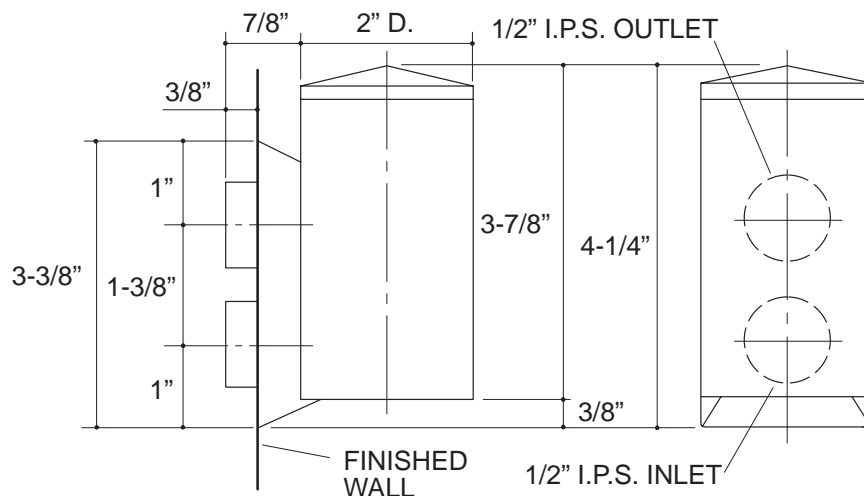
#### TOOLS AND MATERIALS REQUIRED

- Seat wrench (Kohler #21261) or 7/16" square bar
- Hex head wrench, 5/32"
- Thread sealant

### ROUGHING-IN

Rough-in inlet and outlet piping using **Fig. #1**.

**NOTE:** Locate outlet piping at the top and inlet piping at the bottom.



**Fig. #1**

## INSTALLATION

Install two 1/2" I.P.S. nipples on inlet and outlet piping to extend to outside edge of finished wall.

Place wall bracket over nipples. Insert sleeves into wall bracket and thread onto nipples. Tighten sleeves using seat wrench or 7/16" square bar.

Install an O-ring on vacuum breaker inlet and outlet ports. Lubricate O-rings to ease assembly.

Slide vacuum breaker inlet/output ports into sleeves in wall bracket and secure with two socket head screws. Use 5/32" hex head wrench.

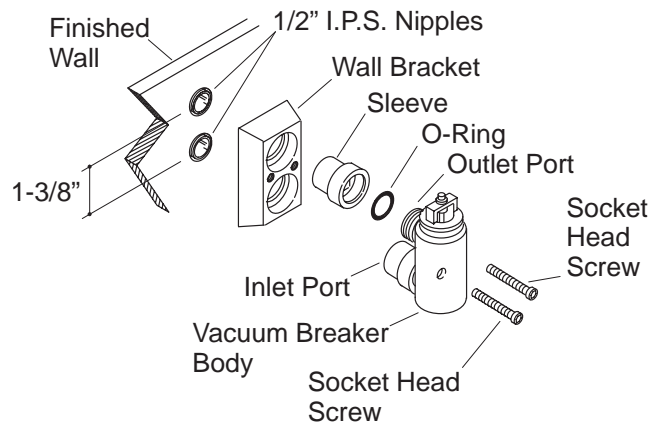


Fig. #2

**NOTE:** Do not install shroud until all construction and rough installation is complete.

Place shroud over vacuum breaker with cut-out over input/output ports and threaded pin through hole at top of shroud.

Thread cover onto threaded pin until hand-tight.

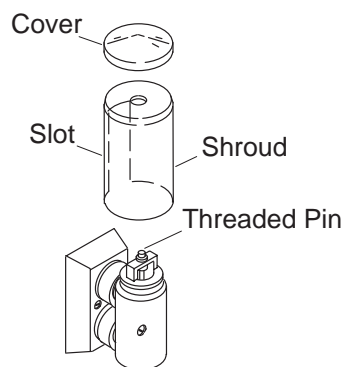


Fig. #3