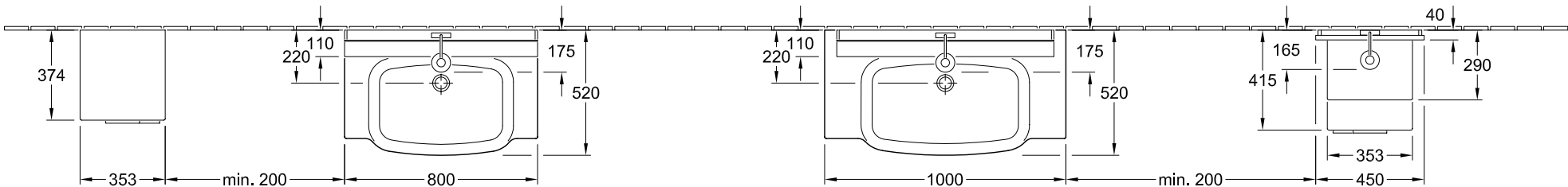
 220 - 240 V mains connection, loose (protection sherpes of country, Regulation 601-02-01)

 220 - 240 V switched main connection (protection sherpes of country, Regulation 601-02-01)

Please note: Leave electrical connections to an expert.
Observe the protection sherpes of the country in question.



The dimensions indicated are not binding.
Villeroy & Boch reserves the right to make product changes.

Dimensions in mm

Designation		2		Villeroy&Boch
SENTIQUE				
Overview of furniture				
Altered:	MAJJ	Scale:	1:25	
	10.12.2007			
		Signed: MAJJ		
		Date:	18.01.2006	
			This drawing may not be copied or passed on to third parties or competitive companies without our permission. Villeroy & Boch accepts no liability whatsoever for these data and technical drawings. Other parties use them at their own risk. The dimensions indicated are not binding. Villeroy & Boch reserves the right to make product changes.	